

35L OIL CONTROL VALVE MANUAL

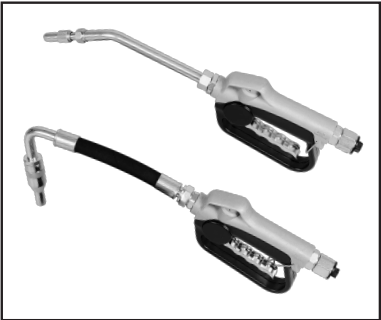
IMPORTANT!

Read the safety warnings and instructions in this manual carefully, before installation and start-up of the control handle. It is the responsibility of the purchaser to retain this manual for future reference. Failure to comply with the recommendations stated in this manual may damage the control handle and void factory warranty.

Airborne particles and loud noise hazards.

Wear ear and eye protection.

Before doing any maintenance on the control handle, be certain all pressure is completely vented from the pump, suction, discharge, piping, and all other openings and connections.



Be certain the air supply is locked out or made non-operational, so that it cannot be started while work is being done on the control handle. Be certain that approved eye protection and protective clothing are worn at all times in the vicinity of the control handle.

Failure to follow these recommendations may result in serious injury or death.

DANGER: Not for use with fluids that have a flash point below 100° F(38° C).

Examples: gasoline, alcohol. Sparking could result in a explosion causing death.

CAUTION

Maximum fluid pressure 750 PSI. Under no circumstances should the control handle be aimed at any person body. Personal injury may be caused.

Product Description

The control handles are used for dispensing automotive lubricants.

The control handle is balanced and light weight for reducing operator fatigue. The grip is shaped to fit the hand comfortably. It is equipped with a four finger trigger and an inlet screen is included.

All models have a manual tip.

Operation

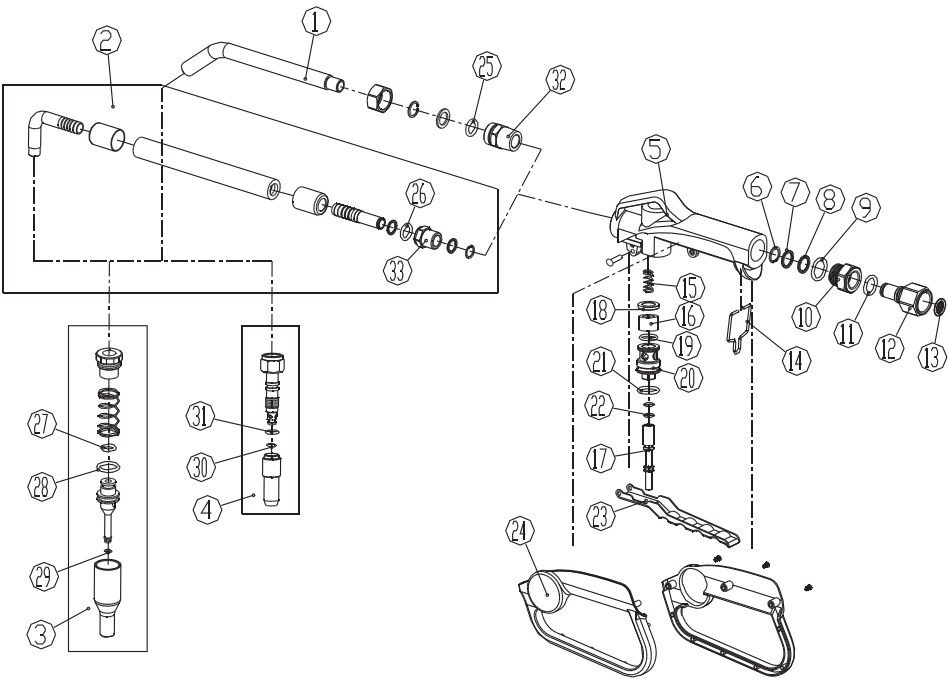
1. Connect the control handle to the lubricant supply line(1/2 NPT male thread required).
2. Open the manual tip.
3. Squeeze control handle trigger. When the required amount of product has been dispensed, release the trigger to stop delivery. Close the manual tip.

Trouble Shooting

If lubricant leaks around inlet and threads; apply thread sealant to tighten threads.

35L OIL CONTROL VALVE MANUAL

Oil Control Valve Exploded View and Part List



No.	Description	Qty	No.	Description	Qty
1	Anti-crip group	1	18	Gasket	1
2	Flexible terminal	1	19	O-ring15.54x2.62	1
3	Big autamatic nozzle	1	20	Mount	1
4	Small manual nozzle	1	21	O-ring 17.12x2.62	1
5	Oil gun body	1	22	O-ring 6.07x1.78	2
6	Spring lock washer	1	23	Handle	1
7	Plain washers	1	24	Cover	2
8	Plain washers	1	25	O-ring 11.8x2.65	1
9	O-ring 15.54x2.62	1	26	O-ring 12.37x2.62	1
10	Link block	1	27	O-ring 9.19x2.62	1
11	O-ring 12.74x1.78	1	28	O-ring 15.54x2.62	1
12	1/2" oil joint	1	29	O-ring 2.9x1.78	1
13	Filter	1	30	O-ring 7.65x1.78	1
14	Flying rings	1	31	O-ring 4.47x1.78	1
15	Spring	1	32	Adapter	1
16	Circle	1	33	Adapter	1
17	Mandril	1			